

Lampada da Terra in alluminio verniciato caratterizzata da quattro proiettori di piccola dimensione.

La possibilità di scelta della temperatura di colore e delle ottiche rendono Newton un'ottima soluzione per innumerevoli richieste sia in ambito pubblico che residenziale.

La collezione Newton si completa con le versioni a parete (pg.316) e a sospensione (pg.130).

Floor lamp in painted aluminum characterized by four small projectors.

Variety of options offered by color temperature and optics, make Newton an excellent solution for countless requests in either public or residential settings.

The Newton collection is completed with the wall (pg.316) and suspension (pg.130) applications.

Lampadaire en aluminium peint caractérisé par quatre petits projecteurs. Le choix de la température de couleur et de l'optique font de Newton une excellente solution pour d'innombrables demandes dans les environnements publics et résidentiels.

La collection Newton est complétée par les versions applique (p.316) et suspension (p.130).

Lámpara de pie en aluminio pintado caracterizada por cuatro pequeños proyectores.

La elección de la temperatura de color y la óptica hacen de Newton una excelente solución para innumerables solicitudes tanto en entornos públicos como residenciales.

La colección Newton se completa con las versiones de pared (pág.316) y suspensión (pág.130).

Stehlampe aus lackiertem Aluminium, gekennzeichnet durch vier kleine Projektoren. Die Wahl der Farbtemperatur und Optik machen Newton zu einer hervorragenden Lösung für unzählige Anforderungen im öffentlichen und privaten Bereich.

Abgerundet wird die Newton-Kollektion durch die Ausführungen Wand (S.316) und Pendel (S.130).

Торшер из окрашенного алюминия с четырьмя небольшими прожекторами.

Возможность выбора температуры света и разных оптик делает Newton отличным выбором для самых разных решений освещения частных и общественных пространств.

В коллекции Newton есть также настенные (стр.316) и подвесные (стр.130) модели.

Newton



3510

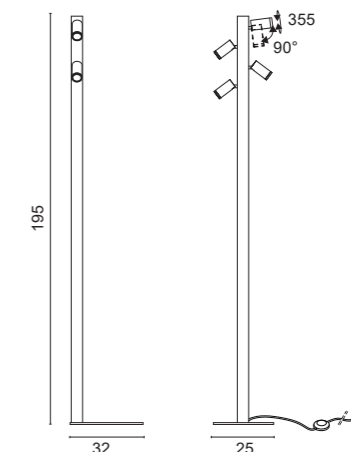
- .01** Bianco - White
- .02** Nero - Black

Accensione ON-OFF
ON-OFF switch

Color temperature	Optics	Light sources	lm
/W 4000K	/24 /38 /58	LED 35,6W	6212lm
/W 4000K	/ST Satinato - Satin	LED 35,6W	6212lm
/WW 3000K	/24 /38 /58	LED 35,6W	5212lm
/WW 3000K	/ST Satinato - Satin	LED 35,6W	5212lm
/XW 2700K	/24 /38 /58	LED 35,6W	4976lm
/XW 2700K	/ST Satinato - Satin	LED 35,6W	4976lm



9,50 Kg



Codici finiture - Finishes codes



.01 Bianco - White



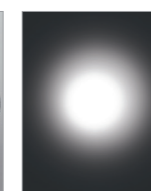
.02 Nero - Black

Ottiche Disponibili - Available Optics



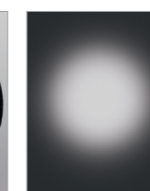
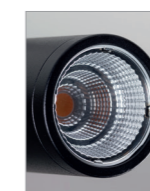
/24

Ottica fascio stretto per luce d'accento
Narrow beam optic for accent lighting



/38

Ottica fascio medio
Medium beam optic



/58

Ottica fascio largo
Wide beam optic



/ST

Ottica fascio diffuso per illuminazione generale
Diffused light optic for general lighting

Lampade da parete o soffitto in alluminio caratterizzate da tre forme cilindriche differenti presentate singole o doppie.

La possibilità di scelta della temperatura di colore, delle ottiche unite ad una buona emissione luminosa rendono Newton un'ottima soluzione per innumerevoli richieste sia in ambito pubblico che residenziale.

La collezione Newton si completa con le versioni a sospensione (pg. 130) e da terra (pg. 246).

Aluminium Wall or Ceiling Lamps with three different cylindrical shapes, either in single or double version.

Color temperature's and optic's wide choice, combined with a performing light output, make Newton an excellent solution for different request in either public or residential installation.

The Newton collection is completed with the suspension (pg. 130) and floor (pg. 246) applications.

Appliques ou plafonniers en aluminium caractérisés par trois formes cylindriques différentes présentées simples ou doubles.

Le choix de la température de couleur, l'optique combinée à un bon rendement lumineux font de Newton une excellente solution pour toutes les demandes dans les environnements publics et résidentiels.

La collection Newton est complétée par les versions suspension (p. 130) et sol (pg. 246).

Lámparas de pared o techo de aluminio caracterizadas por tres formas cilíndricas diferentes presentadas simples o dobles.

La elección de la temperatura de color, la óptica combinada con una buena salida de luz hacen de Newton una excelente solución para muchas solicitudes en entornos públicos y residenciales.

La colección Newton se completa con las versiones de suspensión (pág. 130) y suelo (pág. 246).

Aluminium Wand- oder Deckenleuchten mit drei verschiedenen zylindrischen Formen, wahlweise in Einzel- oder Doppelausführung. Die große Auswahl an Farbtemperatur und Optik, kombiniert mit einer leistungsstarken Lichtleistung, machen Newton zu einer ausgezeichneten Lösung für unterschiedliche Anforderungen in öffentlichen oder privaten Installationen. Abgerundet wird die Newton-Kollektion durch die Applikationen Aufhängung (S. 130) und Boden (S. 246).

Алюминиевые настенные или потолочные светильники трех различных цилиндрических форм в одинарном или двойном исполнении. Широкий выбор цветовой температуры и оптики в сочетании с высокой светоотдачей делают Newton отличным решением для различных задач как в общественных, так и в жилых помещениях. Коллекция Newton дополнена подвесными (стр. 130) и напольными (стр. 246) Приложениями.

Newton

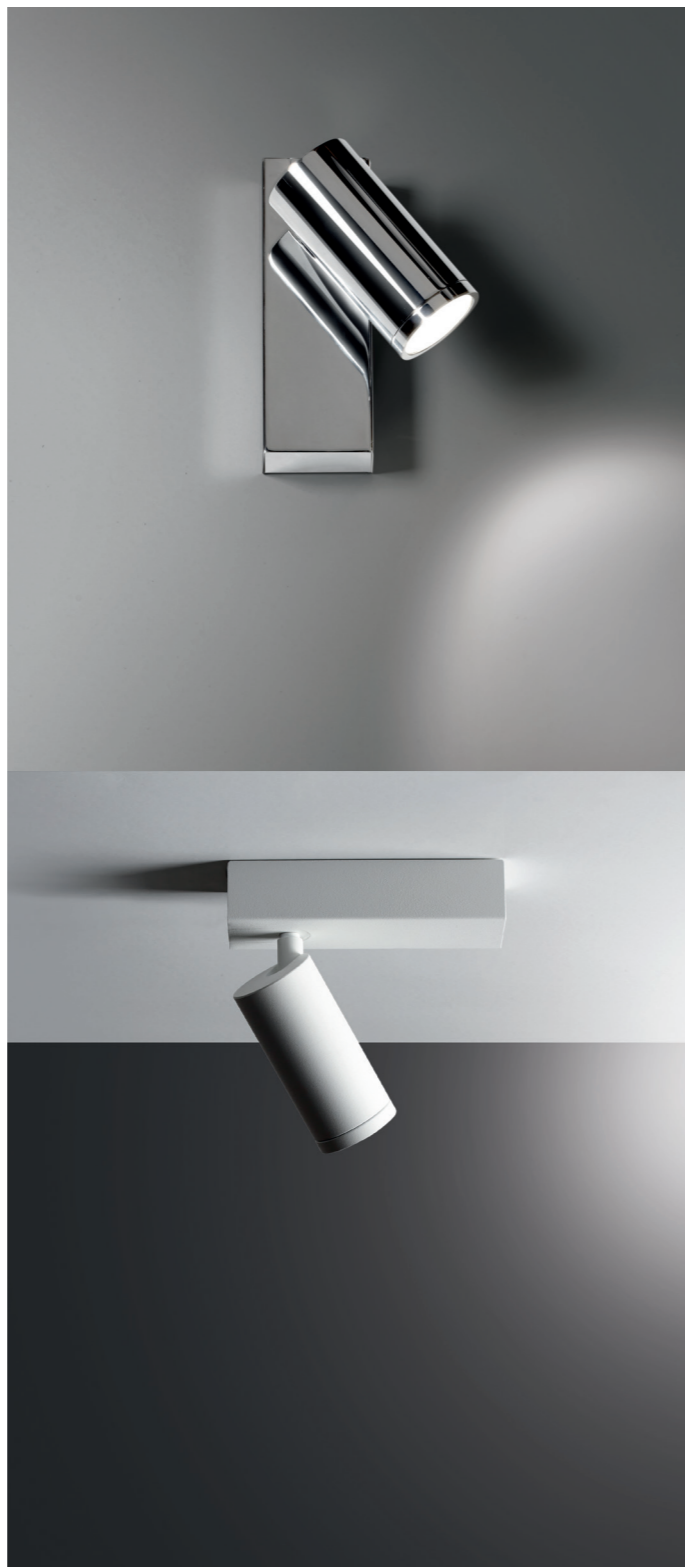
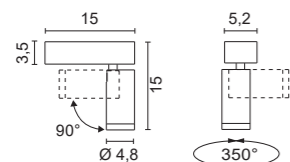


4562

- .01 Bianco - White
- .02 Nero - Black
- .31 Cromato lucido - Cromed

Color temperature	Optics	Light sources	lm
<i>/W</i> 4000K	<i>/24 /38 /58</i>	LED 8,9W	1353lm
<i>/W</i> 4000K	<i>/ST</i> Satinato - Satin	LED 8,9W	1353lm
<i>/WW</i> 3000K	<i>/24 /38 /58</i>	LED 8,9W	1303lm
<i>/WW</i> 3000K	<i>/ST</i> Satinato - Satin	LED 8,9W	1303lm
<i>/XW</i> 2700K	<i>/24 /38 /58</i>	LED 8,9W	1244lm
<i>/XW</i> 2700K	<i>/ST</i> Satinato - Satin	LED 8,9W	1244lm

0,60 Kg

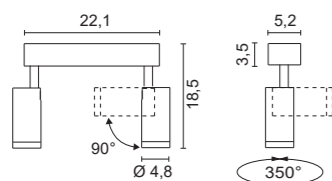


4612

- .01 Bianco - White
- .02 Nero - Black
- .31 Cromato lucido - Cromed

Color temperature	Optics	Light sources	lm
<i>/W</i> 4000K	<i>/24 /38 /58</i>	LED 2x8,9W	2706lm
<i>/W</i> 4000K	<i>/ST</i> Satinato - Satin	LED 2x8,9W	2706lm
<i>/WW</i> 3000K	<i>/24 /38 /58</i>	LED 2x8,9W	2606lm
<i>/WW</i> 3000K	<i>/ST</i> Satinato - Satin	LED 2x8,9W	2606lm
<i>/XW</i> 2700K	<i>/24 /38 /58</i>	LED 2x8,9W	2488lm
<i>/XW</i> 2700K	<i>/ST</i> Satinato - Satin	LED 2x8,9W	2488lm

1,25 Kg



Accessori - Accessories



0267

- Frangiluce
Louvres
- .01 Bianco - White
 - .02 Nero - Black

0274

- Schermo antiabbagliamento
Anti-glare screen
- .01 Bianco - White
 - .02 Nero - Black

Ottiche Disponibili - Available Optics

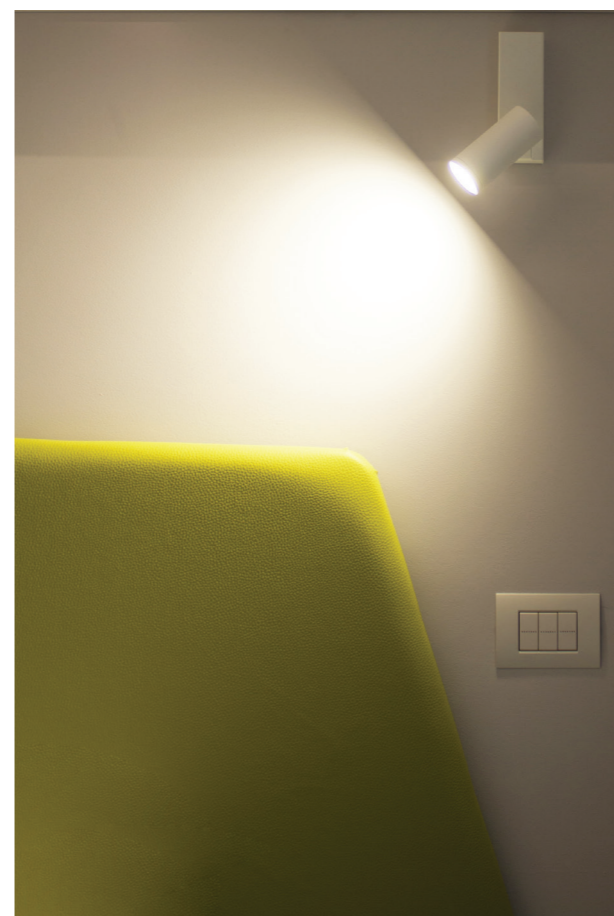


- /24*
Ottica fascio stretto per luce d'accento
Narrow beam optic for accent lighting

- /38*
Ottica fascio medio
Medium beam optic

- /58*
Ottica fascio largo
Wide beam optic

- /ST*
Ottica fascio diffuso per illuminazione generale
Diffused light optic for general lighting



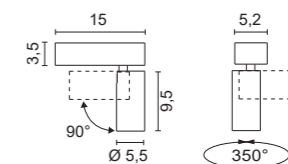
4618

- .01 Bianco - White
- .02 Nero - Black

Light sources

GU10 LED
7W 2700K 580lm (art. 0094/16 /W)
7W 3000K 600lm (art. 0094/16 /WW)
7W 4000K 630lm (art. 0094/16 /XW)

0,50 Kg



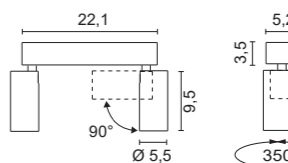
4619

- .01 Bianco - White
- .02 Nero - Black

Light sources

GU10 LED
2x7W 2700K 580lm (art. 0094/16 /W)
2x7W 3000K 600lm (art. 0094/16 /WW)
2x7W 4000K 630lm (art. 0094/16 /XW)

0,80 Kg



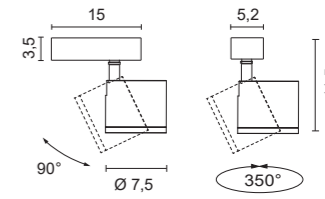


4611

- .01 Bianco - White
- .02 Nero - Black
- .31 Cromato lucido - Cromed

Color temperature	Optics	Light sources	lm
/W 4000K	/13 /40	LED 8,9W	1353lm
/W 4000K	/ST Satinato - Satin	LED 8,9W	1353lm
/WW 3000K	/13 /40	LED 8,9W	1303lm
/WW 3000K	/ST Satinato - Satin	LED 8,9W	1303lm
/XW 2700K	/13 /40	LED 8,9W	1244lm
/XW 2700K	/ST Satinato - Satin	LED 8,9W	1244lm

0,60 Kg

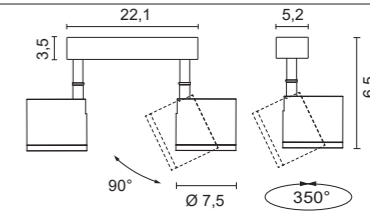


4614

- .01 Bianco - White
- .02 Nero - Black
- .31 Cromato lucido - Cromed

Color temperature	Optics	Light sources	lm
/W 4000K	/13 /40	LED 2x8,9W	2706lm
/W 4000K	/ST Satinato - Satin	LED 2x8,9W	2706lm
/WW 3000K	/13 /40	LED 2x8,9W	2606lm
/WW 3000K	/ST Satinato - Satin	LED 2x8,9W	2606lm
/XW 2700K	/13 /40	LED 2x8,9W	2488lm
/XW 2700K	/ST Satinato - Satin	LED 2x8,9W	2488lm

1,25 Kg



Accessori - Accessories

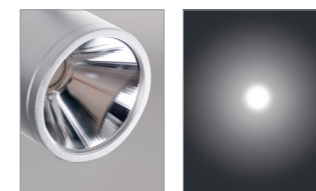


0264

Parabola decorativa
Decorative parabolic reflector

- .01 Bianco - White
- .02 Nero - Black

Ottiche Disponibili - Available Optics



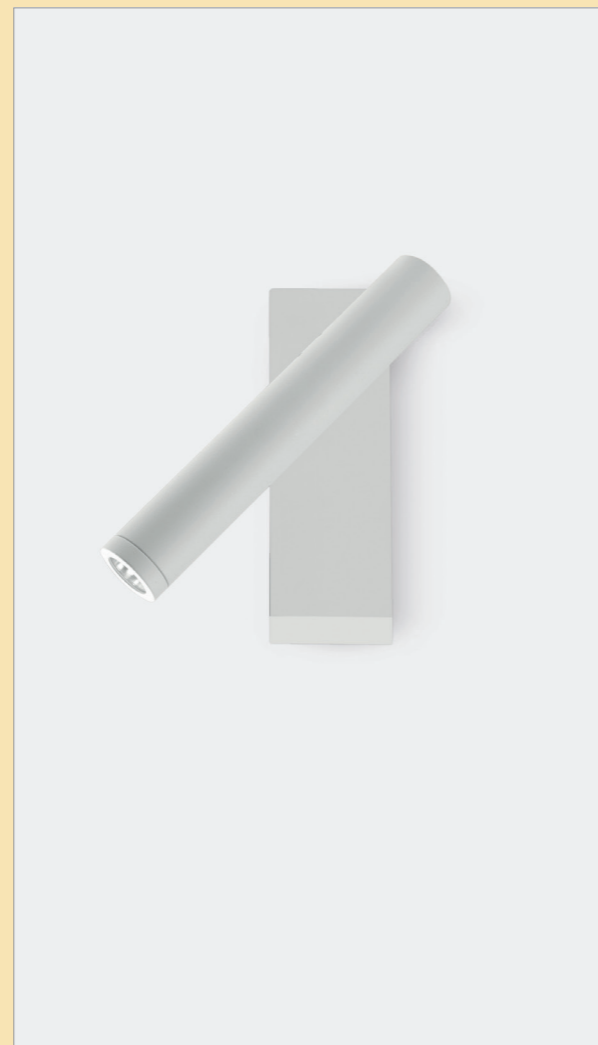
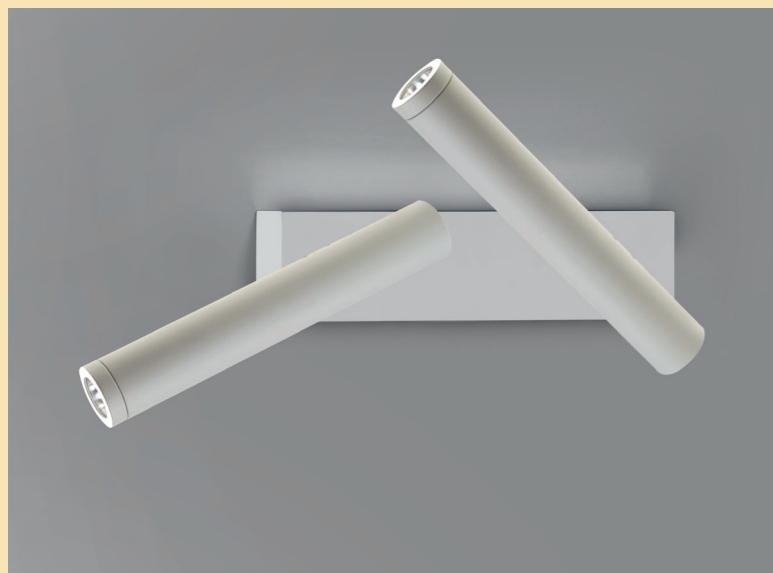
/13
Ottica fascio stretto per luce d'accento
Narrow beam optic for accent lighting



/40
Ottica fascio largo
Wide beam optic



/ST
Ottica fascio diffuso per illuminazione generale
Diffused light optic for general lighting



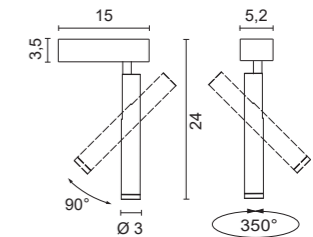
4610

- .01 Bianco - White
- .02 Nero - Black
- .31 Cromato lucido - Cromed

Color temperature	Optics	Light sources	lm
/W 4000K	/35 /48 /63	LED 8,9W	1353lm
/W 4000K	/ST Satinato - Satin	LED 8,9W	1353lm
/WW 3000K	/35 /48 /63	LED 8,9W	1303lm
/WW 3000K	/ST Satinato - Satin	LED 8,9W	1303lm
/XW 2700K	/35 /48 /63	LED 8,9W	1244lm
/XW 2700K	/ST Satinato - Satin	LED 8,9W	1244lm



0,60 Kg



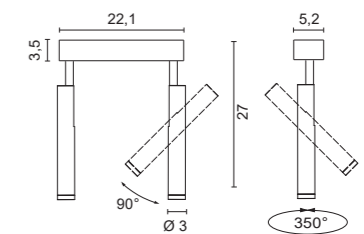
4613

- .01 Bianco - White
- .02 Nero - Black
- .31 Cromato lucido - Cromed

Color temperature	Optics	Light sources	lm
/W 4000K	/35 /48 /63	LED 2x8,9W	2706lm
/W 4000K	/ST Satinato - Satin	LED 2x8,9W	2706lm
/WW 3000K	/35 /48 /63	LED 2x8,9W	2606lm
/WW 3000K	/ST Satinato - Satin	LED 2x8,9W	2606lm
/XW 2700K	/35 /48 /63	LED 2x8,9W	2488lm
/XW 2700K	/ST Satinato - Satin	LED 2x8,9W	2488lm



1,25 Kg



Accessori - Accessories

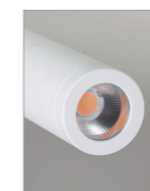


0265

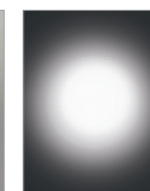
Diffusore in vetro Pyrex sabbato
Sand blasted Pyrex glass diffuser

- .01 Ghiera bianca - White ferrule
- .02 Ghiera nera - Black ferrule

Ottiche Disponibili - Available Optics



/35
Ottica fascio stretto per luce d'accento
Narrow beam optic for accent lighting



/48
Ottica fascio medio
Medium beam optic



/63
Ottica fascio largo
Wide beam optic



/ST
Ottica fascio diffuso per illuminazione generale
Diffused light optic for general lighting